

Listwa zaciskowa X1

-X1	:L1	:L2	:L3	:N	:PE					:PE	:N	:PE		:N	:PE
L1	L2	L3	N	PE	1	2	3	4	5	6	7	8	9	10	

Zasilanie
3~50Hz, 400V
Moc: 11,5 kW
In = 38 A

Zas. falownika (FL1)
went. nawiewu
Moc: 11 kW

Gniazdo
remontowe
+ oświetlenie

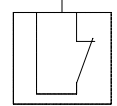
Zasilanie
komunikatora

Listwa zaciskowa X2

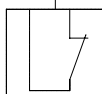
-X2	1	2	3	4	5	6	7	8	9	10	11	12	13	14	15	16	17	18	19	20	21	22	23	24	25	26	27	28	29	30	31	32	33	34	35	36	37	38
-----	---	---	---	---	---	---	---	---	---	----	----	----	----	----	----	----	----	----	----	----	----	----	----	----	----	----	----	----	----	----	----	----	----	----	----	----	----	----

(REZERWA MIEJSCA)

2 x 1 mm

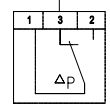


Wyciągnik
bezpieczeństwa
(OPCJA)

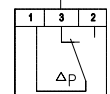


Wyciągnik
p.pożarowy
(OPCJA)

2 x 1 mm

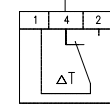


Presostat
filtra nawiewu
PS500

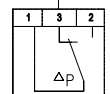


Presostat
went. nawiewu
PS500

2 x 1 mm

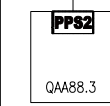


Termostat
p. zamr.
RANCO (6m)

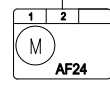


Presostat
filtra nawiewu
PS500

2 x 1 mm

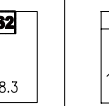


Zadajnik
pomieszczeniowy
QAA88.3



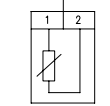
Siłownik przep.
nawiewu
AF24

2 x 0,5 mm

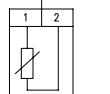


Czujnik temp.
pomieszczeniowy
QAA24

2 x 1 mm

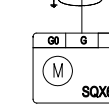


Czujnik temp.
kanałowy naw.
QAM2120.040



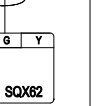
Czujnik temp.
zewnętrznej
QAC22

2 x 1 mm



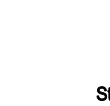
Siłownik zaworu
nagrzewnicy
SQX62

3 x 1 mm



Sygnal załącz.
pompy obieg.
nagrzewnicy

2 x 1 mm



Sterowanie
falownika (FL1)

6 x 1,0 mm



Zasilanie 24VAC
przetwornika ciś.
(OPCJA)

2 x 1,0 mm